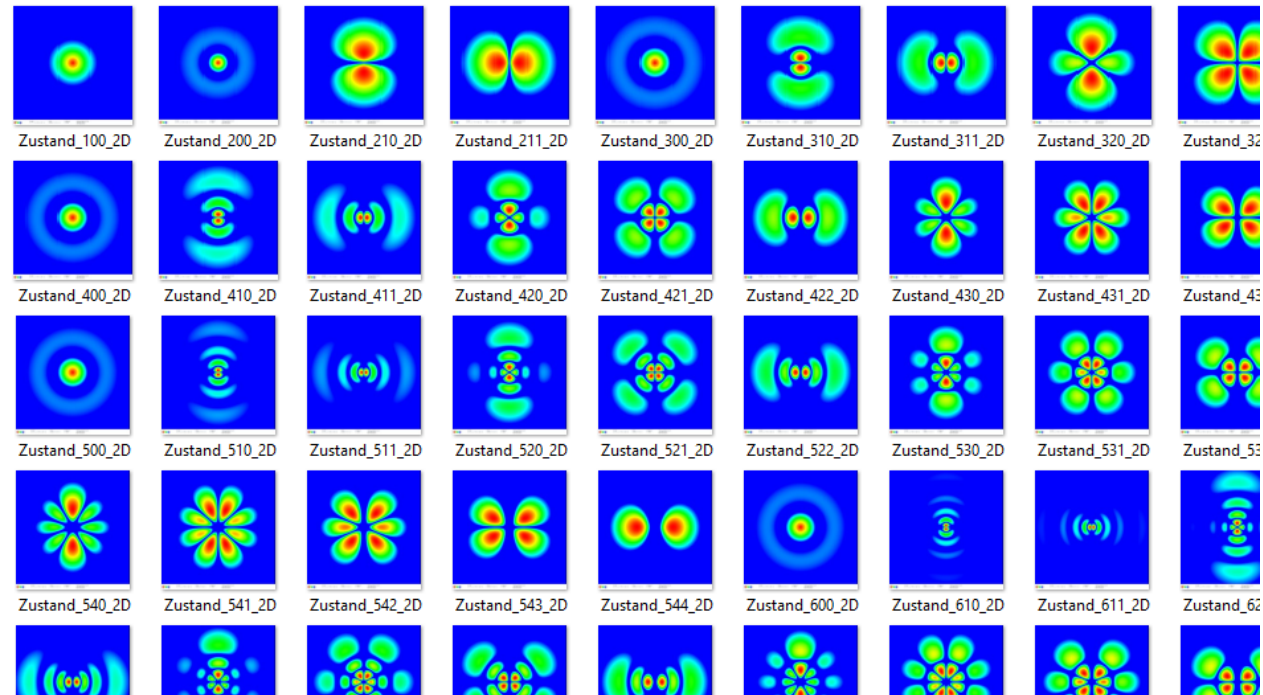


$|\psi|^2$ -Funktionen des Wasserstoffatoms

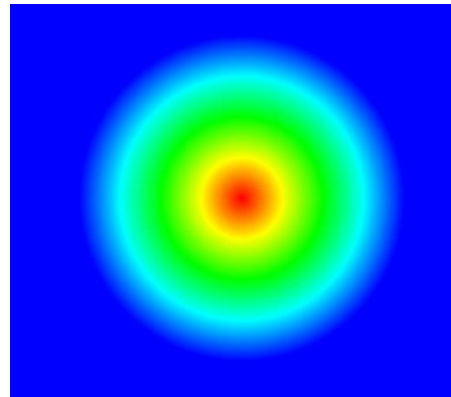
Graphische Darstellungen von $|\psi(x, y, z, t)|^2$



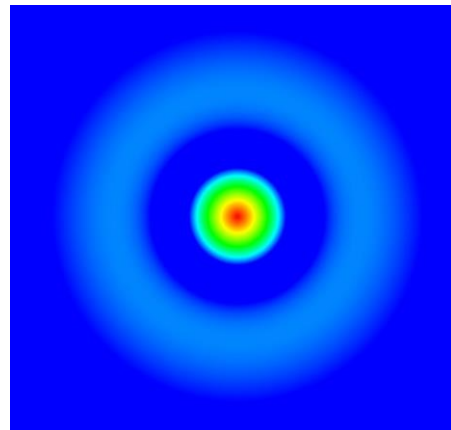
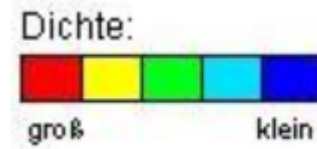
Bildquelle P. Bronner, [CC BY-SA 4.0](#)

$|\psi|^2$ -Funktionen des Wasserstoffatoms

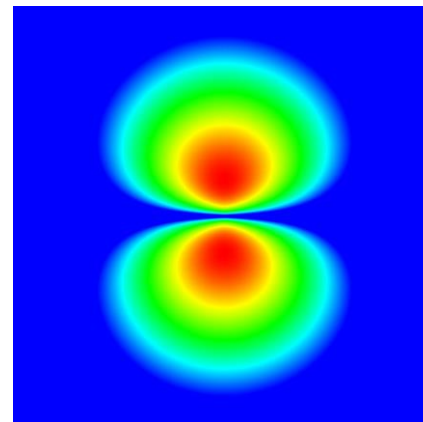
2-D-Bilder:



2s



1s

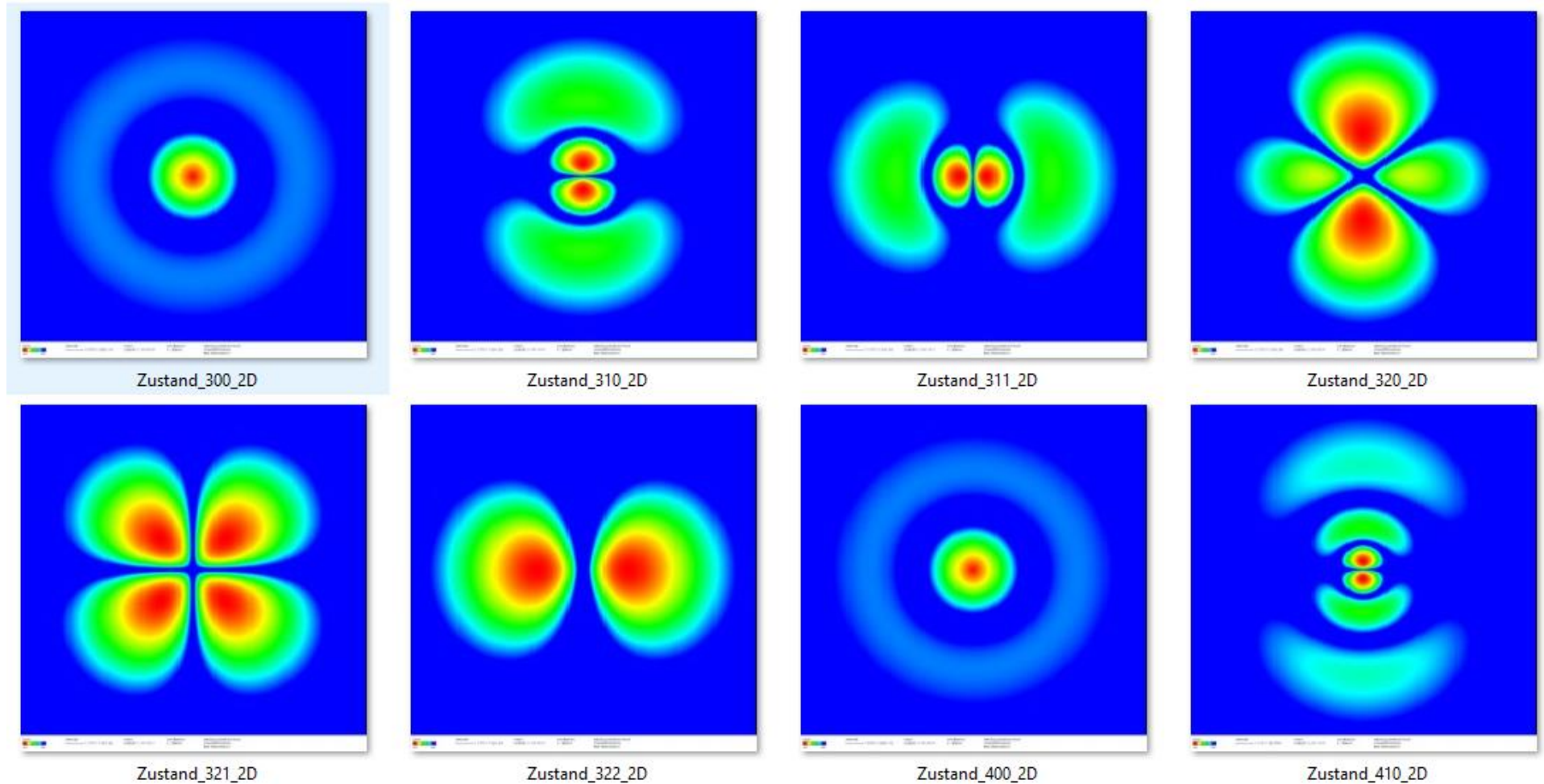


2p

Bildquelle P. Bronner, [CC BY-SA 4.0](#)

$|\psi|^2$ -Funktionen des Wasserstoffatoms

2-D-Bilder:

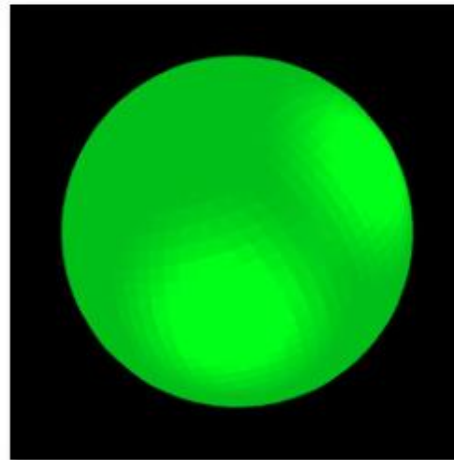


Bildquelle P. Bronner, [CC BY-SA 4.0](#)

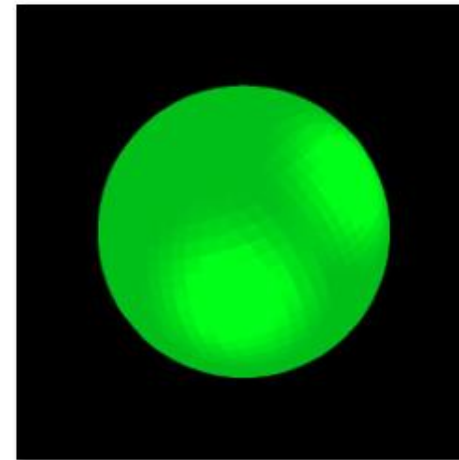
$|\psi|^2$ -Funktionen des Wasserstoffatoms

3-D-Bilder:

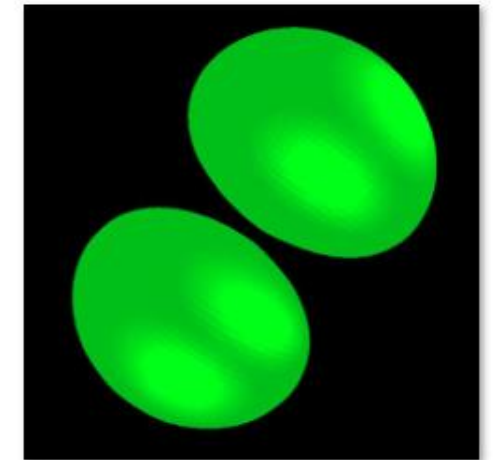
Gezeichnet ist die Fläche gleicher Wahrscheinlichkeitsdichte, außerhalb derer die Restwahrscheinlichkeit 10 % beträgt.



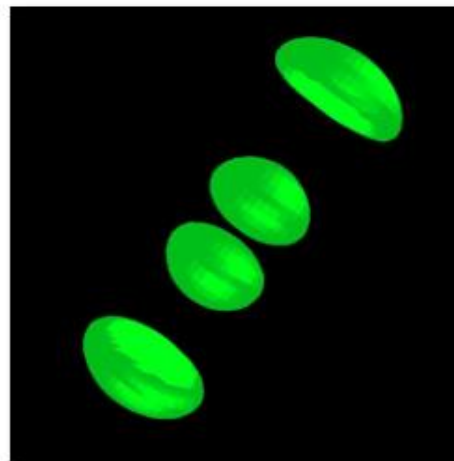
Zustand_100_3D



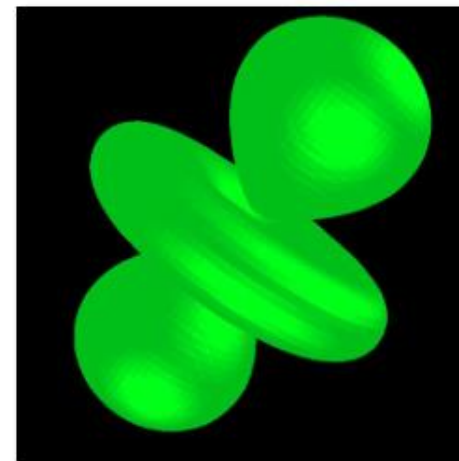
Zustand_200_3D



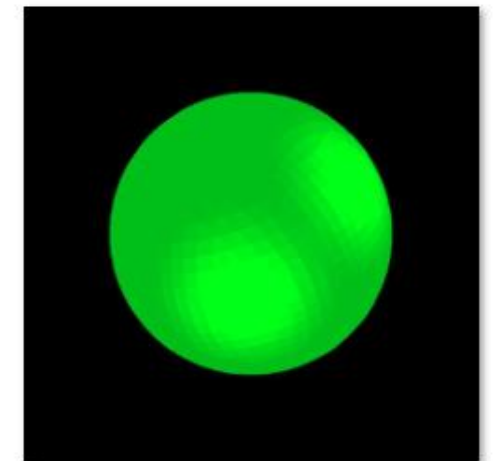
Zustand_210_3D



Zustand_310_3D



Zustand_320_3D



Zustand_400_3D

Bildquelle P. Bronner, [CC BY-SA 4.0](https://creativecommons.org/licenses/by-sa/4.0/)